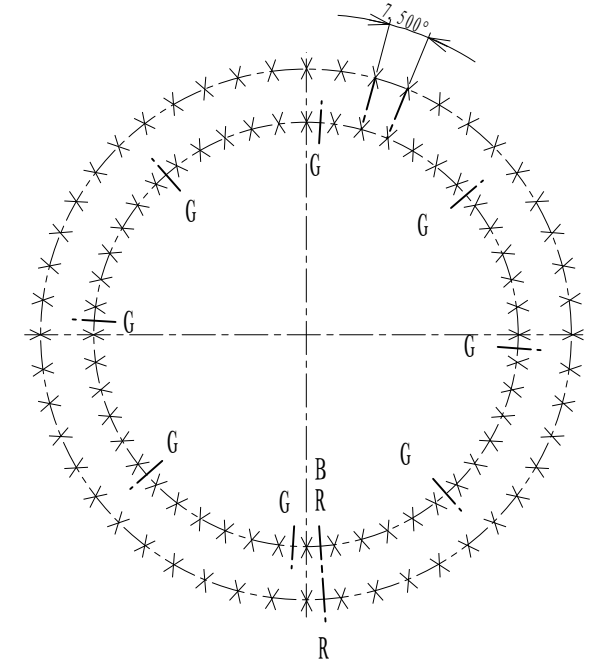


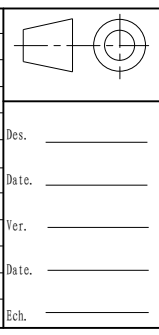
Implantation suivant A
 Implantation according to A
 Ansicht nach A



| | |
|--|--|
| Denture - Gear - Verzahnung | |
| Droite | |
| Module 14 | Angle de pression 20° |
| Diametral pitch 135 | Pressure angle Eingriffswinkel 1.50 |
| Nbr. de dents 1890 | Troncature - Kopfkürzung |
| Diamètre primitif 1890 | Pitch diameter - Teilkreissdurchmesser |
| Déport 2 m d 14 | Profile shift coefficient |
| Add. mod. 2 m d - Profilschiebung 2 m d | |
| Cote sur 16 dents 671.311 | Measurement on teeth |
| Zahnweite bei Zähnen 670.891 | Teeth spacing |
| Faux rond au diamètre primitif - Run out on P.D. Rundlauffehler am Teilkreis | |
| Non trempée 0.67 | Hardened 0.87 |
| Ungelärtet | Gehärtet |

| | | | | | |
|--|---|----|-----------------------|-------------|-----------|
| Tolérances générales suivant IT-ETR-061 General tolerances according to IT-ETR-061 Allgemeine Toleranzen nach IT-ETR-061 | | | | | |
| X | R.E. | 48 | Trous de fixation | φ 30 | equiv. |
| | O.R. | | Mounting holes | | equiv. |
| | A.R. | | Befestigungsboreungen | | gl. Abst. |
| | R.I. | 48 | Trous de fixation | φ 30 | equiv. |
| | I.R. | | Mounting holes | | equiv. |
| | J.R. | | Befestigungsboreungen | | gl. Abst. |
| G | R.E. | | Trous de graisseurs | | equiv. |
| | O.R. | | Grease holes | | equiv. |
| | A.R. | | Schmierboreungen | | gl. Abst. |
| | R.I. | 8 | Trous de graisseurs | M 10 x 1.00 | equiv. |
| | I.R. | | Grease holes | | equiv. |
| | J.R. | | Schmierboreungen | | gl. Abst. |
| B | Position approximative du bouchon et du raccord de trempé | | | | |
| R | Filler plug and hardening connection of raceway | | | | |
| | ca Stopfen - und heerteschlupf - position | | | | |

| | | | | | |
|--|--|--|--|--|--|
| | | | | | |
| | | | | | |
| | | | | | |
| | | | | | |
| | | | | | |
| | | | | | |
| | | | | | |
| | | | | | |
| | | | | | |
| | | | | | |



| | |
|----------------------|--|
| Masse estimée 624 kg | N° 01-1712-00 |
| Gewicht ca 624 lbs | |
| Estimated weight | Indice A |
| Des. _____ | Luoyang Jiecheng Bearing Technology Co., Ltd Add: D1805, No.3 Lianmeng road, Luoyang, Henan, China. Postal: 471003 Phone: +86-379-68611678 Fa x: +86-379-68611679 E-mail: sales@jcb-bearing.com |
| Date. _____ | |
| Ver. _____ | |
| Date. _____ | |
| Ech. _____ | |

Indice A

Luoyang Jiecheng Bearing Technology Co., Ltd

Add: D1805, No.3 Lianmeng road,
 Luoyang, Henan, China. Postal: 471003
 Phone: +86-379-68611678
 Fa x: +86-379-68611679
 E-mail: sales@jcb-bearing.com